



**Request for Bids**  
**Central R-III School District**  
**116 Rebel Drive**  
**Park Hills, MO 63601**  
**Contact: Chris Warden**  
**Phone: 573.431.2616 x 4202**  
**Fax: 573.431.0700**  
**E-mail: cwarden@centralr3.org**

April 16<sup>th</sup>, 2026

**RFP No: 2026 District Camera System and Door Control System**  
**Title: 2026 District Camera System and Door Control System**  
**Receiving Date and Time: May 15th, 2026 1:00pm**

Central R-III School District is currently accepting bids for the District's camera system and door control system.

The bids will be accepted until **1:00pm, CST, May 15th, 2026**. No bid will be accepted after the official time and date. Bids must address all components of the RFP.

**AN OPTIONAL WALK-THROUGH WILL TAKE PLACE ON AT APRIL 29TH, AT 10AM, STARTING AT THE HIGH SCHOOL CAMPUS (116 REBEL DRIVE).**

**SUBMISSION**

Submissions will be accepted by Vendor's choice of one of the following:

US postal service: The envelope shall be marked on its face with the name of the person, firm, or corporation plus "2026 District Camera System and Door Control System" and delivered to Central R-3 High School, 116 Rebel Drive, Park Hills, MO 63601 C/O Chris Warden.

Electronic (email): Submissions must be delivered to cwarden@centralr3.org with the Subject: Your Company Name – 2026 District Camera System and Door Control System

Fax Submissions must be sent to Chris Warden at 573-431-0700 with the Subject Heading: Your Company Name – 2026 District Camera System and Door Control System

**All questions and inquiries should be addressed to the contact below via EMAIL ONLY:**

**Chris Warden**  
**Technology Director**  
**cwarden@centralr3.org**

Central R-3 School District reserves the right to reject any bid which, through bidder error or omission, is found to be mathematically incorrect, otherwise incomplete, or not in compliance with Central R-3 School District bid specifications. The right to reject bids which are incomplete, inaccurate, or not in compliance shall be exercised in the best interest of the Central R-3 School District.

In addition, the Board of Education reserves the right to waive technicalities to select any vendor filing a proposal and to reject any or all bids.

It is the policy of the Central R-3 School District in making purchases to give preference to and encourage the purchase of all commodities manufactured, mined, produced, or grown within the state, and to all firms, corporations, or individuals doing business as Missouri firms, corporations, or individuals, when quality and price are approximately the same (policy 5320).

Vendors are strongly encouraged to carefully read this entire document.

All proposals must be submitted on the basis of the specifications attached. No alternate proposals that significantly deviate or modify the concept and ultimate objectives of this proposal will be considered. Non-compliance with specifications will disqualify proposals from further consideration.

Any explanation or statement that the Vendor wishes to make must be contained with the proposal but shall be written separately and independently of the proposal proper and attached thereto.

Unless the Vendor so indicates, it is understood that the Vendor has proposed in strict accordance with the RFP requirements.

The District reserves the right to reject any or all proposals and to waive informalities and minor irregularities in proposals received. The District, in its sole discretion, will determine whether an irregularity is minor.

The District reserves the right to decline any or all proposal submissions, or to cancel the RFP call, in whole or in part, at any time prior to making an award, for any reason, or no reason, without liability being incurred by the District to any Vendor for any expense, cost, loss, or damage incurred or suffered by the Vendor as a result of such withdrawal.

While the District has used considerable efforts to ensure an accurate representation of information in this RFP document, the information contained herein is contained solely as a guideline for proposers. The information is not guaranteed or warranted to be accurate by the District, nor is it necessarily comprehensive or exhaustive. Nothing in this RFP document is intended to relieve proposers from forming their own opinions and conclusions with respect to the matters addressed in the RFP document.

The Vendor is responsible for its own verification of all information provided to it. The Vendor must satisfy itself, upon examination of this RFP, as to the intent of the specifications. After the submission of the proposal, no complaint or claim that there was any misunderstanding will be entertained.

No oral interpretation will be made to any Vendor as to the meaning of the RFP. Any oral communication will be considered unofficial and non-binding on the District. **Questions and inquiries about the RFP should be made in writing by email and submitted to Chris Warden (cwarden@centralr3.org).**

The District may award a contract based upon the initial proposals received without discussion of such proposals. Accordingly, each initial proposal should be submitted with the most favorable price and service standpoint.

To facilitate consideration of the proposals, the District may, at its option, conduct interviews after receipt of the proposal. If this is necessary, the Vendor will be contacted to arrange a time for an interview.

The District reserves the right to hold negotiations in an attempt to clarify and qualify terms of any proposal.

The District reserves the right to negotiate final contract terms with any Vendor, regardless of whether such Vendor was interviewed or submitted a best and final proposal.

The District reserves the right to withdraw the award to a successful Vendor within 30 days of the award if, in the opinion of the District, the successful Vendor is unable or unwilling to enter into a form of contract satisfactory to the District. The District shall be entitled to do so without any liability being incurred by the District to the Vendor.

In the event of a conflict between the proposal and the RFP, the District shall resolve any inconsistency in favor of the RFP. Additionally, the District shall in good faith decide all inconsistencies and/or disputes pertaining to the RFP and the proposal. The Vendor agrees to abide by the decisions of the District. Any ambiguity in the proposal because of omissions, error, lack of clarity or noncompliance by the Vendor with specifications, instructions and all conditions of bidding shall be construed in the favor of the District.

All of the terms and conditions of this RFP are deemed to be accepted by the Vendor and incorporated into the Vendor's proposal submission. The terms and conditions stated in this RFP and the successful Vendor's response to this RFP shall be incorporated into the contract between the District and the successful Vendor.

By submitting a proposal, the Vendor certifies that it is not currently barred or otherwise prohibited from submitting proposals for contracts to any political subdivision or agency of the State of Missouri and it is not an agent of a person or entity that is currently barred or otherwise prohibited from submitting proposals for contracts by any political subdivision or agency of the State of Missouri.

The successful Vendor will be responsible for the safe delivery of all hardware. If deliveries prove to be unsatisfactory, or other problems arise, the District reserves the right to withdraw the award to the successful Vendor.

The District shall reserve the right to return equipment that does not meet the purchase agreement or is unsatisfactory at the cost to the Vendor within thirty (30) days of delivery.

**Central R-III School District is currently accepting bids for the following items:**

1. Hybrid Cloud Camera Infrastructure
  - a. Platform: The preferred solution is Avigilon Alta (Cloud-native). The district intends to transition to a unified cloud-managed environment.
    - i. Hardware Requirements by Category
      1. Category A: New/Replacement Locations (Avigilon Alta Native):
        - a. All cameras listed in Appendix C must be Avigilon Alta cloud-native IP cameras.
        - b. These cameras must connect directly to the District's network and the Alta Cloud without the need for an intermediate appliance for storage or processing.
        - c. Minimum 5mp resolution is required for these units.
      2. Category B: Retained Locations (Dahua Legacy via Cloud Connector):
        - a. Legacy Camera Integration: The district currently operates 183 Dahua IP cameras (see Appendix A).
        - b. For the cameras listed in Appendix B, Vendors must provide Avigilon Alta Cloud Connectors with sufficient processing and storage to ingest existing Dahua ONVIF streams.
        - c. The Cloud Connectors must be sized to handle the total bandwidth and storage requirements of the retained Dahua cameras, providing a minimum of 30 days of local high-resolution storage.
        - d. The vendor is responsible for ensuring these legacy cameras are properly integrated via ONVIF and that the Cloud Connector enables Alta Aware AI Analytics (person/vehicle detection) for these feeds.
    - ii. Storage Strategy: The solution must support a hybrid storage model:
      1. On-Premise: Local storage on Cloud Connectors for high-resolution primary recording.
      2. Cloud: Minimum 30-day cloud backup/archiving for critical event clips.
  - b. Camera Specifications & New Hardware
    - i. New Cameras: All new camera installations must be Avigilon Alta cloud-native cameras (no Cloud Connector required for these units).
    - ii. Resolution: Minimum 5mp for new installations, with AI analytics (occupancy, heat mapping, and vehicle/person detection) enabled natively on the edge.
    - iii. PTZ Functionality: New PTZ cameras must support Alta Smart PTZ features, allowing for digital tracking and seamless control via the Alta Aware web and mobile interfaces.
      1. Legacy PTZ: Vendors must confirm that existing Dahua PTZ cameras can be controlled via the Cloud Connector using ONVIF Bridge protocols.
  - c. Licensing & "Single Pane of Glass"
    - i. Unified Management: The solution must eliminate the need for the existing DSS Express VM. All cameras (Legacy Dahua + New Alta) must be managed through the Alta Aware interface.

- ii. Licensing Duration:
      - 1. Provide 3-year Alta Aware Cloud Licenses for every camera (legacy and new).
        - a. Quote optional pricing for 5 year.
      - 2. 3-Year Warranty for hardware of Cloud Connector and Alta Camera is preferred.
        - a. Quote optional pricing for 5 year.
    - iii. User Access: Licensing must include access for minimum 45 user accounts. These user accounts must have view rights for live or playback functionality.
  - d. Installation & Transition Services
    - i. Phase-out Plan: The vendor must provide a cut-over plan that migrates one building at a time from the DSS Express server to the Alta Cloud environment to ensure zero downtime for security personnel.
    - ii. Cabling: For new camera locations, CAT6 cabling installation must be included. For legacy locations, the vendor must test and certify existing cabling before connecting to the new Cloud Connectors.
    - iii. Decommissioning: The vendor is responsible for the physical removal and disposal (or return to district) of the 183 minus the retained legacy cameras and the existing Dahua NVRs.
  - e. Verification of Legacy Compatibility
    - i. Site Survey Requirement: Before final bid acceptance, the winning vendor must verify that the specific Dahua models listed in Appendix B are running firmware compatible with Alta Cloud Connectors.
    - ii. PTZ Control: For any retained Dahua PTZ cameras, the vendor must demonstrate full PTZ control (Live and Searchable) within the Alta Aware interface.
- 2. District-Wide Door Access Control System (Upgrade & Replacement)
  - a. The District currently utilizes a Kantech EntraPass system at the High School and Middle School. The existing hardware consists primarily of electric strikes and REX (Request-to-Exit) sensors. This RFP seeks a complete replacement of the Kantech head-end hardware and software along with additions to the other buildings district-wide with a modern, cloud-native solution.
  - b. Preferred Solution: Avigilon Alta Access (Motorola Solutions) is the preferred platform to allow for native "single-pane-of-glass" integration with the Avigilon Alta video system.
  - c. Removal & Integration of Legacy Hardware
    - i. Decommissioning: The vendor is responsible for the removal of all legacy Kantech KT-series controllers and the decommissioning of the EntraPass server.
    - ii. Reuse of Door Hardware: Where functional REX sensors, strikes, and door contacts should be tested and integrated into the new system. If existing hardware is incompatible or failing, the vendor must include replacement costs in the bid.
    - iii. Cabling: Bidders should assume the reuse of existing low-voltage cabling from the doors to the IDF/MDF closets but must certify the runs before connecting new Alta controllers. The cost of cabling to the new locations district-wide must also be included in the bid.
  - d. Current and Additional doors (Appendix D - Maps)
    - i. High School
      - 1. Current
        - a. Auditorium
        - b. Band
        - c. Band 2
        - d. Courtyard
        - e. Fieldhouse
        - f. Kitchen Dock
        - g. Cafeteria
        - h. Back Student Parking
        - i. Front Door keypad - Video Intercom is separate from Entrapass
        - j. Cellar Door
        - k. Library
        - l. Practice Gym
        - m. Stairwell Dock
        - n. Weight Room West

- o. Weight Room East
- ii. Middle School
  - 1. Current
    - a. 6th Grade
    - b. Columbia Street
    - c. Kitchen Dock
    - d. Gym
    - e. Shop Gate
    - f. Shop Door
  - 2. Additional
    - a. 115 Exit
    - b. Front Door - with Intercom
    - c. Vestibule door
    - d. Cafe Exit
- iii. West Elementary
  - 1. Additional
    - a. Front Door - with Intercom
    - b. 102 Exit
    - c. 511 Exit
    - d. 301 Exit
    - e. Cafeteria Exit
    - f. 106 Exit
- iv. Alternative School
  - 1. Additional
    - a. Gym front
    - b. BIP
    - c. Tier 2
- v. Central Elementary
  - 1. Additional
    - a. Front Door
    - b. Vestibule Door
    - c. Cafeteria Dock
    - d. Gym Foyer
    - e. Kindergarten (A3) Exit
    - f. 1st (B7) exit
    - g. 2nd (D5) Exit
    - h. C Hall (C7) Exit
    - i. C15 Exit
- vi. Administration Building
  - 1. Additional
    - a. Lower Level - Intercom
    - b. Upper Level - Intercom
- e. Entry Experience & Credentials
  - i. Multi-Tech Readers: All new readers must be Alta Smart Keypad Readers at entrances.
  - ii. Access Methods:
    - 1. Physical: Encrypted Keyfobs and Keycards.
    - 2. PIN: Keypad access for specific staff, students or after-hours contractors.
    - 3. Mobile: Native Avigilon Alta Open app for iOS and Android.
- f. Administrative Features & Scheduling
  - i. Cloud Scheduling: The system must provide an intuitive interface for Unlock/Lock Scheduling. This must include the ability to set "First-Person-In" rules (e.g., the door doesn't unlock for the public at 7:00 AM unless a staff member has arrived and scanned their badge first).
    - 1. Lock/Unlock Scheduling: System must support complex schedules for student arrival, athletic events, and public board meetings.

- ii. Rights Management: Must allow for granular user groups (e.g., Administration, Teachers, Maintenance, Coaches) with varying access levels across building zones.
      - iii. Mobile Admin: Administrators must have the ability to unlock any door, modify schedules, or add/delete users from a Mobile App.
    - g. Optional School Safety & Lockdown Setup
      - i. Global Lockdown: The system can support a "One-Tap Lockdown" feature accessible via the mobile app and/or physical panic buttons.
      - ii. Video Verification: The system can be linked to the Avigilon Alta Aware video platform. (e.g., When a door is accessed (or forced open), the corresponding video from a nearby Avigilon camera must be instantly available for review in the access log.)
    - h. Licensing
      - i. 3-Year Unified License: Provide a 3-year subscription for the Alta Access software.
        - 1. Quote optional pricing for 5 year.
      - ii. 3-Year Warranty for hardware replacement/repair is preferred.
        - 1. Quote optional pricing for 5 year.
      - iii. Credentialing: Include a "bucket" of 150 mobile credentials and 300 physical encrypted fobs.
    - i. Optional Add-Alternates (Pricing to be Itemized Separately)
      - i. Extended Battery Backup: Provide an optional cost for a dedicated battery backup solution for each controller enclosure, capable of providing a minimum of 4 hours of full operation for the readers and strikes during a main power failure.
3. Optional Weapons Detection
  - a. The District is requesting optional pricing for a weapons detection solution at the Alternative School.
  - b. Preferred Solution: CEIA Opengate (or equivalent). This system must be capable of screening students with backpacks and bags without requiring the removal of personal items (cell phones, keys, etc.).
    - i. Hardware & Portability
      - 1. Dual-Pillar Design: The system must consist of two independent, freestanding pillars with no physical or wired crossbar, allowing for a wide, unobstructed passage.
      - 2. Extreme Portability: Each pillar must weigh less than 35 lbs and be capable of setup by a single staff member in under one minute.
      - 3. Weather Resistance: Pillars must be rated for both indoor and outdoor use to allow for screening at athletic events or varied entrance points.
      - 4. Power: The system must be capable of operating on long-life battery power (minimum 10 hours) or a standard 110v outlet.
    - ii. Detection & Throughput
      - 1. Weapon Focus: The system must use electromagnetic analysis to distinguish between high-caliber weapons (handguns, rifles, IEDs) and harmless personal electronics (laptops, phones).
      - 2. High Flow: The system must support a "walk-through" pace to prevent bottlenecks during morning student arrival.
      - 3. Alerting: The pillars must provide 360-degree visual LED alarms and audible signals.
    - iii. Mobile App Control: Staff must be able to adjust detection sensitivity levels and monitor alarm counts via a native mobile app (iOS/Android).
    - iv. If possible - Video Verification: The vendor must propose a method to integrate Opengate alerts with the Avigilon Alta Aware platform. When the Opengate alarm triggers, the nearest Avigilon camera should automatically "bookmark" the event for a unified audit trail.
    - v. Licensing Duration:
      - 1. 3-Year Software License: Provide a 3-year subscription software.
        - a. Quote optional pricing for 5 year.
      - 2. 3-Year Warranty for hardware replacement/repair is preferred.
        - a. Quote optional pricing for 5 year.

Appendix A

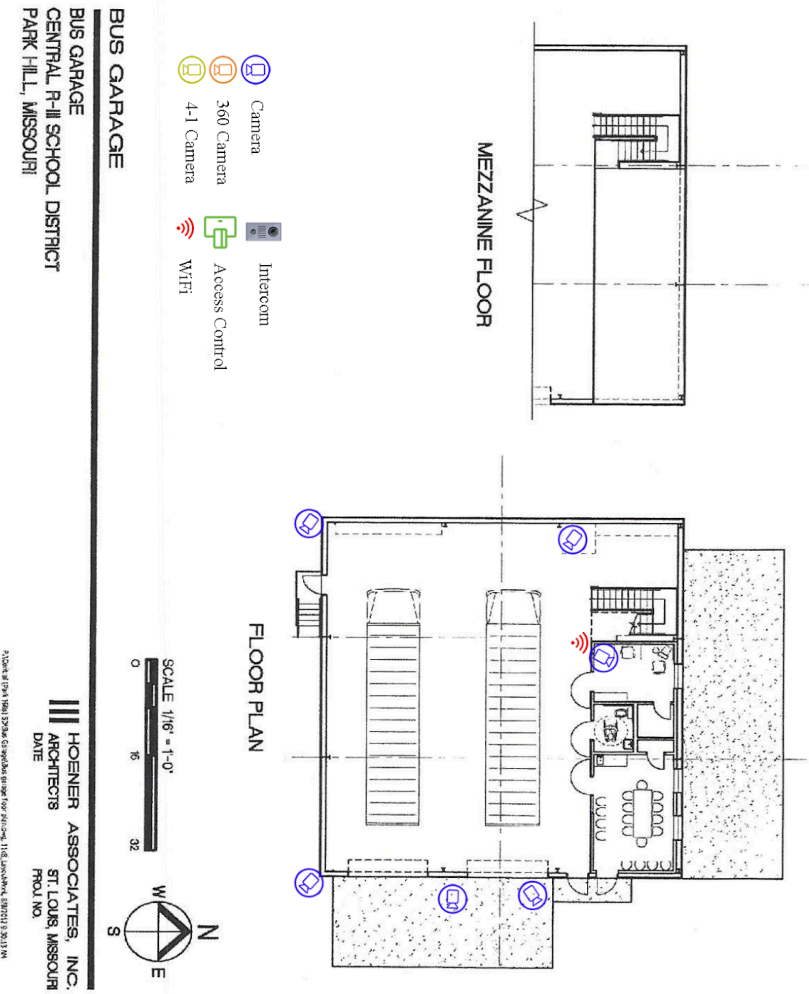
Current Cameras and Locations





**Central R-III School District  
Emergency Operations Plan**

**Central R-III Bus Garage Floor Plan**






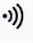


**BUS GARAGE**  
**BUS GARAGE**  
**CENTRAL R-III SCHOOL DISTRICT**  
**PARK HILL, MISSOURI**

**HOENER ASSOCIATES, INC.**  
**ST. LOUIS, MISSOURI**  
**ARCHITECTS**  
**DATE**  
**PROJ. NO.**

PLANS BY THE HOENER ARCHITECTURAL FIRM FOR PROJECT 1142, LANCASTER, MISSOURI IN 2013.M

# High School - Exterior

-  Camera
-  360 Camera
-  4-1 Camera
-  Intercom
-  Access Control
-  WiFi



# High School - Upper Level



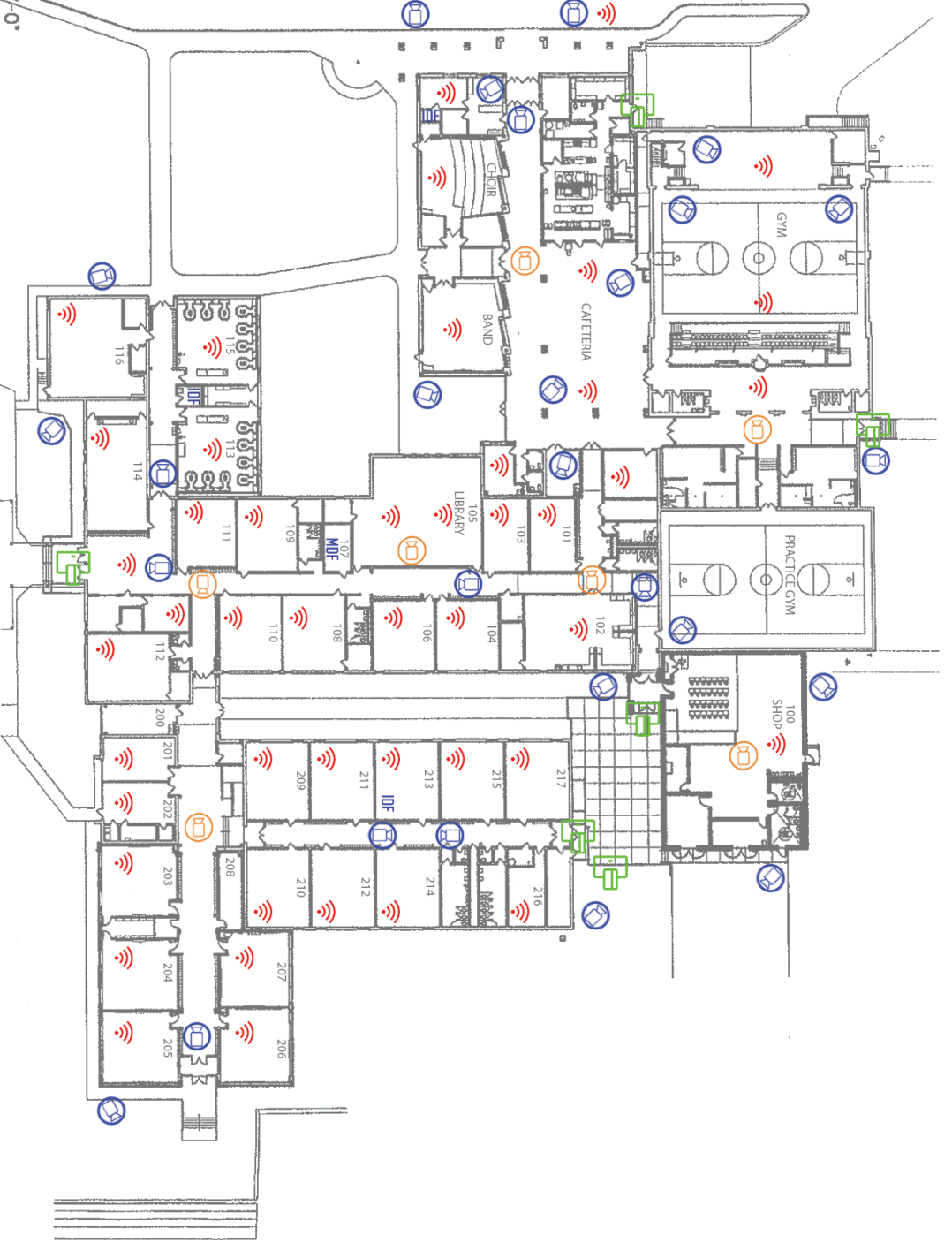
# High School Lower Level









SCALE 1" = 60'-0"  
 0 60 120







MASTER FLOOR PLAN

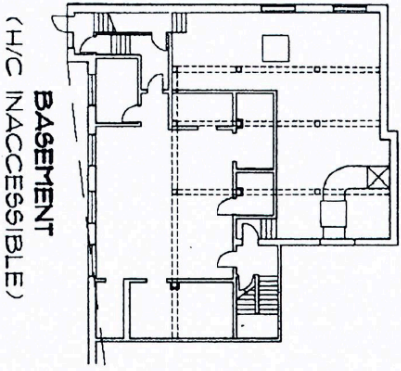
CENTRAL MIDDLE SCHOOL  
 CENTRAL R-III SCHOOL DISTRICT  
 PARK HILLS, MISSOURI



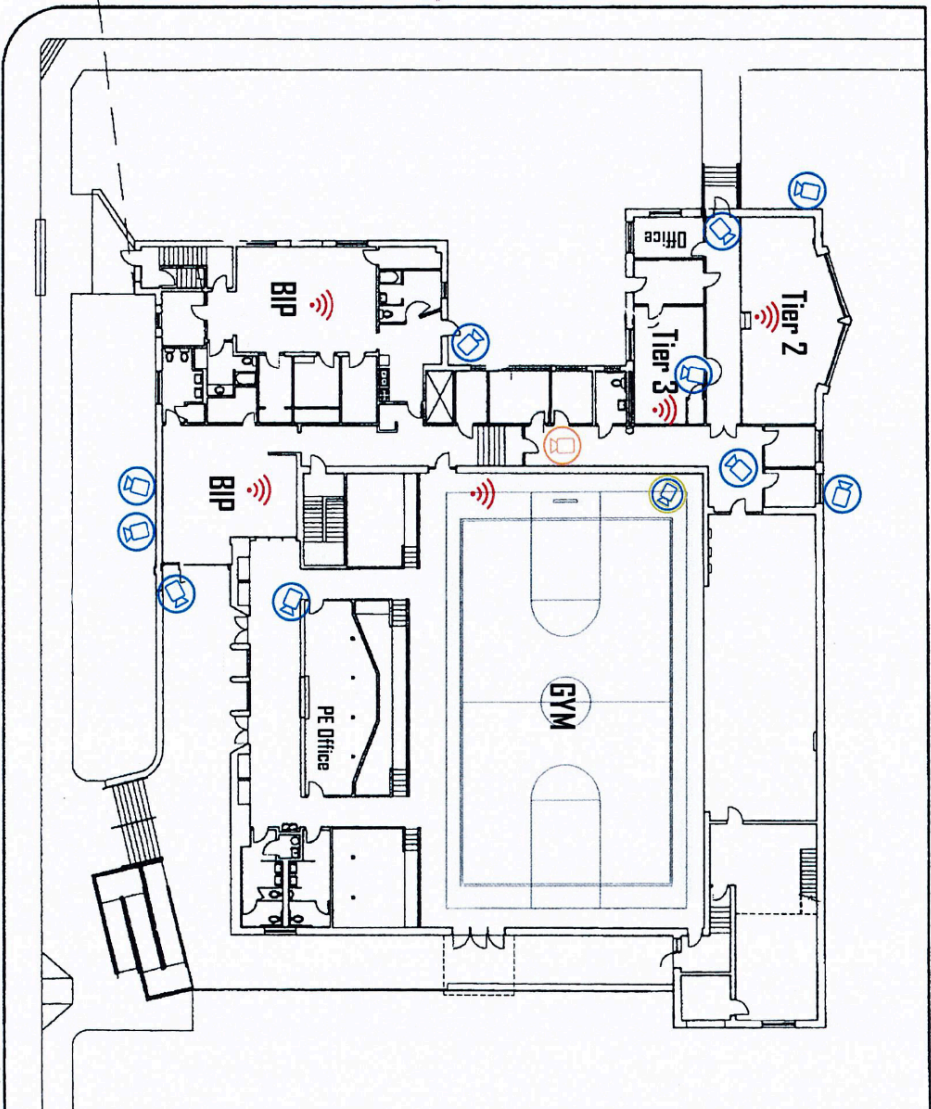
-  Camera
-  360 Camera
-  4-1 Camera
-  Intercom
-  Access Control
-  WIFI

# Alternative School

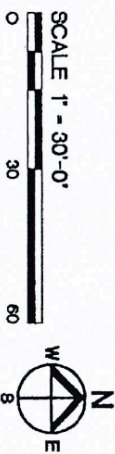
-  Camera
-  360 Camera
-  4-1 Camera
-  Intercom
-  Access Control
-  WiFi



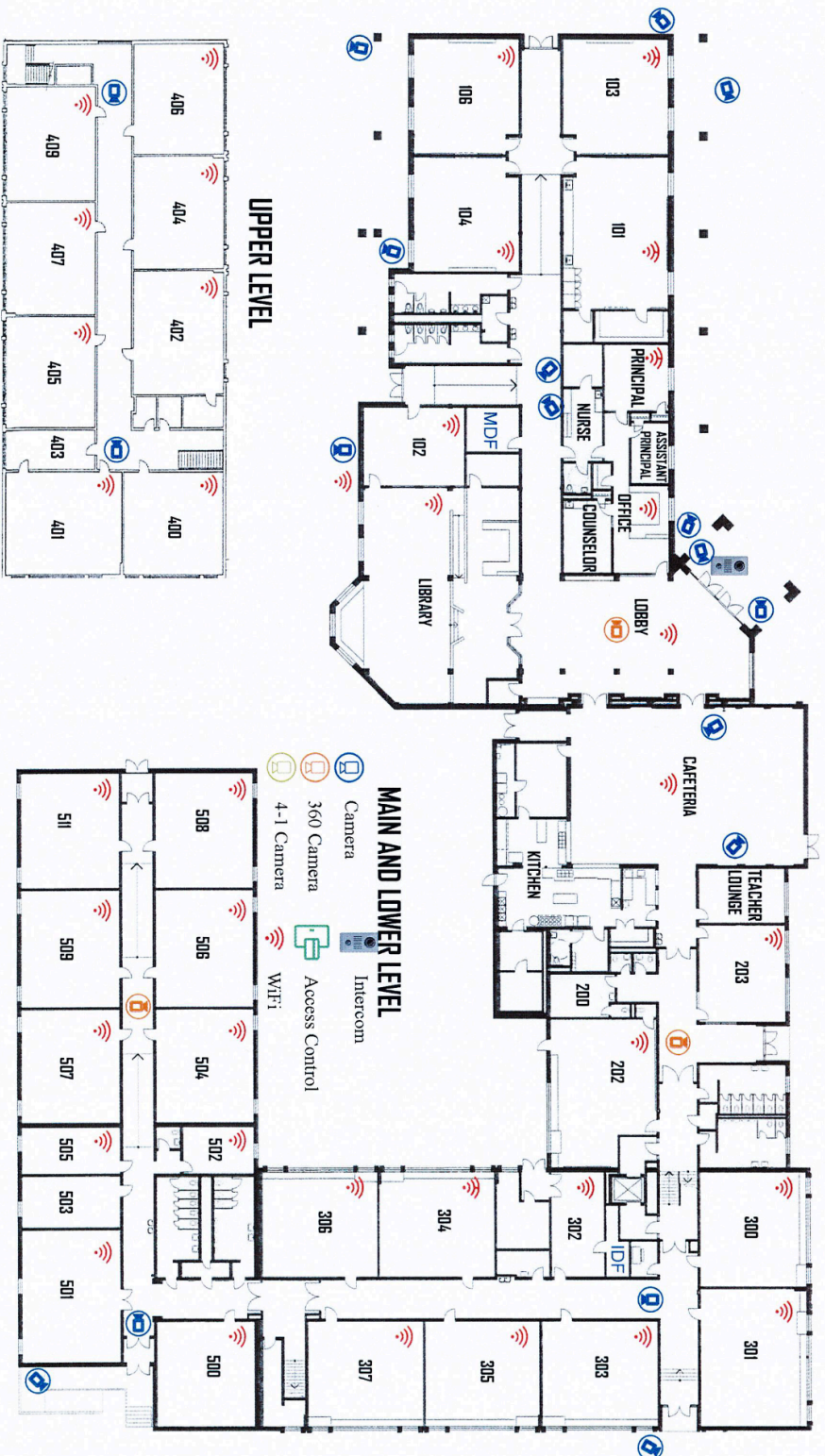
SMITH STREET



FIVE STREET









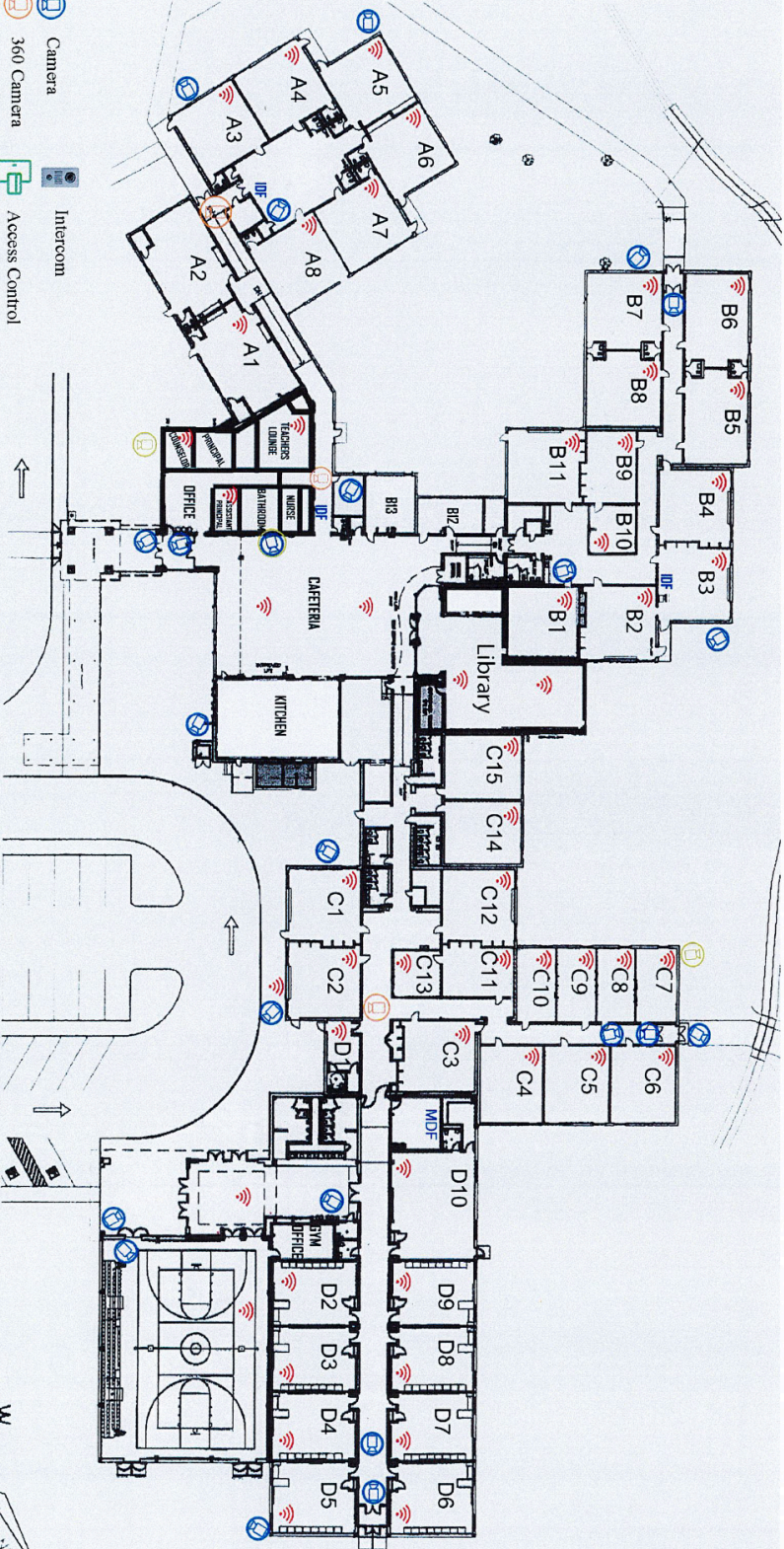
# WEST ELEMENTARY



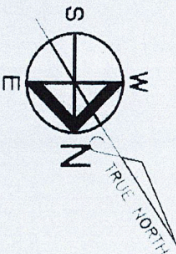
WEST ELEMENTARY SCHOOL  
 CENTRAL R-3 SCHOOL DISTRICT  
 PARK HILLS, MO

# CENTRAL ELEMENTARY

-  Camera
-  360 Camera
-  4-1 Camera
-  Intercom
-  Access Control
-  WiFi



SCALE 1" = 60'-0"  
0 60 120



Appendix B

Retained Dahua Cameras by Location and Model Type

**Building - High School**

Type	Model	Quantity
360 Fish Eye	N55BT5/N55CT5	6
Bullet - 5MP	N43AB52	14
Dome - 5MP	N42BJ62	34

**Building - Middle School**

Type	Model	Quantity
360 Fish Eye	N55BT5/N55CT5	7
Bullet - 5MP	N43AB52	11
Dome - 5MP	N42BJ62	14

**Building - West Elementary**

Type	Model	Quantity
360 Fish Eye	N55BT5/N55CT5	3
Bullet - 5MP	N43AB52	8
Dome - 5MP	N42BJ62	8
Bullet - 4K Vari-Focal	N85CB5Z/N85DB6Z	2

**Building - Central Elementary**

Type	Model	Quantity
360 Fish Eye	N55BT5/N55CT5	3
Bullet - 5MP	N43AB52	11
Dome - 5MP	N42BJ62	5
Dual Head	DH-IPC-PDW5849-A180-E2-ASTE	1

**Building - Administrative Office, Bus Garage, Alternative School**

Type	Model	Quantity
Bullet - 5MP	N43AB52	6
Dome - 5MP	N42BJ62	10
Dual Head	DH-IPC-PDW5849-A180-E2-ASTE	1

Total 144 retained Dahua

Appendix C

Camera Inventory with New, Replacing, Moving or Existing Count

Central Elementary			900 St. Francois Ave	
Camera Name	Type	Mount	Status	Pulled Camera Name
Front Parking	3-Head	Pendant Wall Mount	New, Replacing What's There	
2nd Playground	3-Head	Pendant Wall Mount	New, Replacing What's There	
1st pod	4 Head	In-Ceiling	New, Replacing What's There	
C Hall	Dual Head		New, Replacing What's There	
2nd Hallway	Dual Head		New, Replacing What's There	
K Playground 3	4K Bullet		New, Location, Move from Inventory	CE / PAT Trailer
2nd Playground 2	Bullet- 5MP		New, Location, Move from Inventory	WE / Bus Loop
2nd Playground 3	Bullet- 5MP		New, Location, Move from Inventory	WE / Parent Pickup
PAT Door	Bullet- 5MP		New, Location, Move from Inventory	WE / Front Door
Office	Dome-5MP		New, Location, Move from Inventory	CE / C Door
1st Hall 2	Dome-5MP		New, Location, Move from Inventory	CE / 1st Pod
Library	Dome-5MP		New, Location, Move from Inventory	CE / C Hallway
Art Hall	3-Head	In-Ceiling	New, Location	
2nd Ext	4 Head	Corner Mount	New, Location	
Nurse	360-FE		Existing	
K Hallway	360-FE		Existing	
2nd Pod	360-FE		Existing	
Ext Gym Door	Bullet- 5MP		Existing	
K Playground 1	Bullet- 5MP		Existing	
K Playground 2	Bullet- 5MP		Existing	
Outside 1st	Bullet- 5MP		Existing	
Ext Library	Bullet- 5MP		Existing	
Front Vestibule	Bullet- 5MP		Existing	

Front Awning	Bullet- 5MP		Existing	
Staff Lot	Bullet- 5MP		Existing	
Staff Lot 2	Bullet- 5MP		Existing	
Cafe Dock	Bullet- 5MP		Existing	
Gym Entrance	Bullet- 5MP		Existing	
1st Hallway	Dome-5MP		Existing	
K Pod	Dome-5MP		Existing	
Isolation Room	Dome-5MP		Existing	
Gym Foyer	Dome-5MP		Existing	
Gym	Dome-5MP		Existing	
Cafe	Dual Head		Existing	

West Elementary			403 West Fite Street	
Camera Name	Type	Mount	Status	Pulled Camera Name
Parent Pickup	3-Head	Pendant Wall Mount	New, Replacing What's There	
100 Hall	3-Head	In-Ceiling	New, Replacing What's There	
Cafe	360-FE		New, Replacing What's There	
Bus Loop	4-Head	Corner Mount	New, Replacing What's There	
Staff Lot	4-Head	Corner Mount	New, Replacing What's There	
Playground 3	4K Bullet		New, Location, Move from Inventory	WE / Basketball Court
Fite Street	Bullet- 5MP		New, Location, Move from Inventory	ALT / Parking lot
Outdoor Classroom	Bullet- 5MP		New, Location, Move from Inventory	WE / Staff Lot
Office	Dome- 5MP		New, Location, Move from Inventory	WE / Cafe N.
Stairwell	Dome- 5MP		New, Location, Move from Inventory	WE / 100 Hall E.
Lobby	360-FE		Existing	
200 Hall	360-FE		Existing	
5th Ramp	360-FE		Existing	
Baseball Field	4K Bullet		Existing	
Baseball Concessions	4K Bullet		Existing	

Playground 1	Bullet- 5MP		Existing	
Playground 2	Bullet- 5MP		Existing	
Front Awning	Bullet- 5MP		Existing	
5th Ext Ramp	Bullet- 5MP		Existing	
BB Right Field	Bullet- 5MP		Existing	
BB Cage/Fence	Bullet- 5MP		Existing	
BB Storage	Dome- 5MP		Existing	
Bus Loop 2	Dome- 5MP		Existing	
3rd Hall	Dome- 5MP		Existing	
5th Hall	Dome- 5MP		Existing	
4th Hall N.	Dome- 5MP		Existing	
4th Hall S.	Dome- 5MP		Existing	

<b>Alternative School</b>			<b>412 West Fite Street</b>	
Camera Name	Type	Mount	Status	Pulled Camera Name
Hallway	3-Head	In-Ceiling	New, Replacing What's There	
Entrance	4-Head	Pendant Wall Mount	New, Replacing What's There	
Bleachers	Dome- 5MP		New, Location, Move from Inventory	WE / 100 Hall W.
Tier 2	Dome- 5MP		Existing	
Tier 3	Dome- 5MP		Existing	
Tier 3 Entrance	Bullet- 5MP		Existing	
Gym Entrance	Bullet- 5MP		Existing	
Gym Foyer	Dome- 5MP		Existing	
Gym	Dual Head		Existing	

<b>Middle School</b>			<b>801 Columbia Street</b>	
Camera Name	Type	Mount	Status	Pulled Camera Name
Practice Gym	360-FE		Replacing What's There, Move from Inventory	ALT / Tier 2 Exp (Cafe)
Softball Outfield	Bullet- 5MP		Replacing What's There, Move from Inventory	ALT / Parking Lot
Foyer	4-Head	In-Ceiling	New, Replacing What's There	

Softball Field	3-Head	Pendant Wall Mount	New, Replacing What's There	
Columbia Street	4-Head	Corner Mount	New, Replacing What's There	
North Parking Lot	4-Head	Pendant Wall Mount	New, Replacing What's There	
Cafe Courtyard	4-Head	Corner Mount	New, Replacing What's There	
Rear Foyer	4-Head	In-Ceiling	New, Replacing What's There	
6th Charging Stations	4-Head	In-Ceiling	New, Replacing What's There	
Cafe Hall	360-FE		New, Location, Move from Inventory	HS / Science Hall
Locker Room Hall	360-FE		New, Location, Move from Inventory	MS / 6th Charging Stations
Parent Dropoff	Bullet- 5MP		New, Location, Move from Inventory	MS / Columbia Street
Dock	Bullet- 5MP		New, Location, Move from Inventory	MS / North Parking lot
Basketball Court	Bullet- 5MP		New, Location, Move from Inventory	MS / Cafe Courtyard
Gym Bleachers	Dome- 5MP		New, Location, Move from Inventory	MS / Practice Gym
Music Hall	Dome- 5MP		New, Location, Move from Inventory	MS / Rear Foyer
Front Awning	3-Head	Surface Mount	New, Location	
Locker Room Hallway	360-FE		Existing	
Cafe Ramp	360-FE		Existing	
Shop	360-FE		Existing	
Library	360-FE		Existing	
Staff Restrooms Rear	360-FE		Existing	
Bus Loop 2	Bullet- 5MP		Existing	
Field	Bullet- 5MP		Existing	
Shop Staff Lot	Bullet- 5MP		Existing	
Shop Court Yard	Bullet- 5MP		Existing	
Gate Entrance	Bullet- 5MP		Existing	

Shop Ext	Bullet- 5MP		Existing	
Softball Concessions	Bullet- 5MP		Existing	
Bus Loop 1	Bullet- 5MP		Existing	
Gym N.	Dome- 5MP		Existing	
Gym S.	Dome- 5MP		Existing	
Gym Stage	Dome- 5MP		Existing	
Concessions Room	Dome- 5MP		Existing	
Practice Gym Ramp	Dome- 5MP		Existing	
Science Hall	Dome- 5MP		Existing	
6th Hall W.	Dome- 5MP		Existing	
6th Hall E.	Dome- 5MP		Existing	
Front Vestibule	Dome- 5MP		Existing	
Library Hall	Dome- 5MP		Existing	
200 Hall	Dome- 5MP		Existing	
Office	Dome- 5MP		Existing	

<b>High School</b>			<b>116 Rebel Drive</b>	
Camera Name	Type	Mount	Status	Pulled Camera Name
E. Fieldhouse	3-Head	Pendant Wall Mount	New, Replacing What's There	
N. Fieldhouse	3-Head	Pendant Wall Mount	New, Replacing What's There	
S. Fieldhouse	3-Head	Pendant Wall Mount	New, Replacing What's There	
Front Awning	3-Head	Pendant Wall Mount	New, Replacing What's There	
Cafe Parking	3-Head	Pendant Wall Mount	New, Replacing What's There	
High Street Parking	3-Head	Pendant Wall Mount	New, Replacing What's There	
Front Parking	4-Head	Pendant Wall Mount	New, Replacing What's There	
South Parking Lot	4-Head	Pendant Wall Mount	New, Replacing What's There	

Field	4-Head	Pendant Wall Mount	New, Replacing What's There	
Fieldhouse Parking	4-Head	Pendant Wall Mount	New, Replacing What's There	
N. Parking Lot	4-Head	Pendant Wall Mount	New, Replacing What's There	
Science Hall	4-Head	In-Ceiling	New, Replacing What's There	
Locker Room Hallway	360- FE		Existing	
Band Door	360- FE		Existing	
SR Weightroom	360- FE		Existing	
SR Wrestling	360- FE		Existing	
Cafe Door Ext	360- FE		Existing	
Shop	360- FE		Existing	
High Street	Bullet- 5MP		Existing	
Lower Level Stairs	Bullet- 5MP		Existing	
Band Yard Courtyard	Bullet- 5MP		Existing	
Cafe Dock	Bullet- 5MP		Existing	
Rebel Drive	Bullet- 5MP		Existing	
Rebel Drive Parking	Bullet- 5MP		Existing	
South Parking	Bullet- 5MP		Existing	
Auditorium Sidewalk	Bullet- 5MP		Existing	
Field Concessions	Bullet- 5MP		Existing	
Band Room Courtyard	Bullet- 5MP		Existing	
SR Fieldhouse Awning	Bullet- 5MP		Existing	
SR Auditorium Dock	Bullet- 5MP		Existing	
SR Outside Picnic Tables	Bullet- 5MP		Existing	
SR Football Awning	Bullet- 5MP		Existing	
Math Hall	Dome- 5MP		Existing	

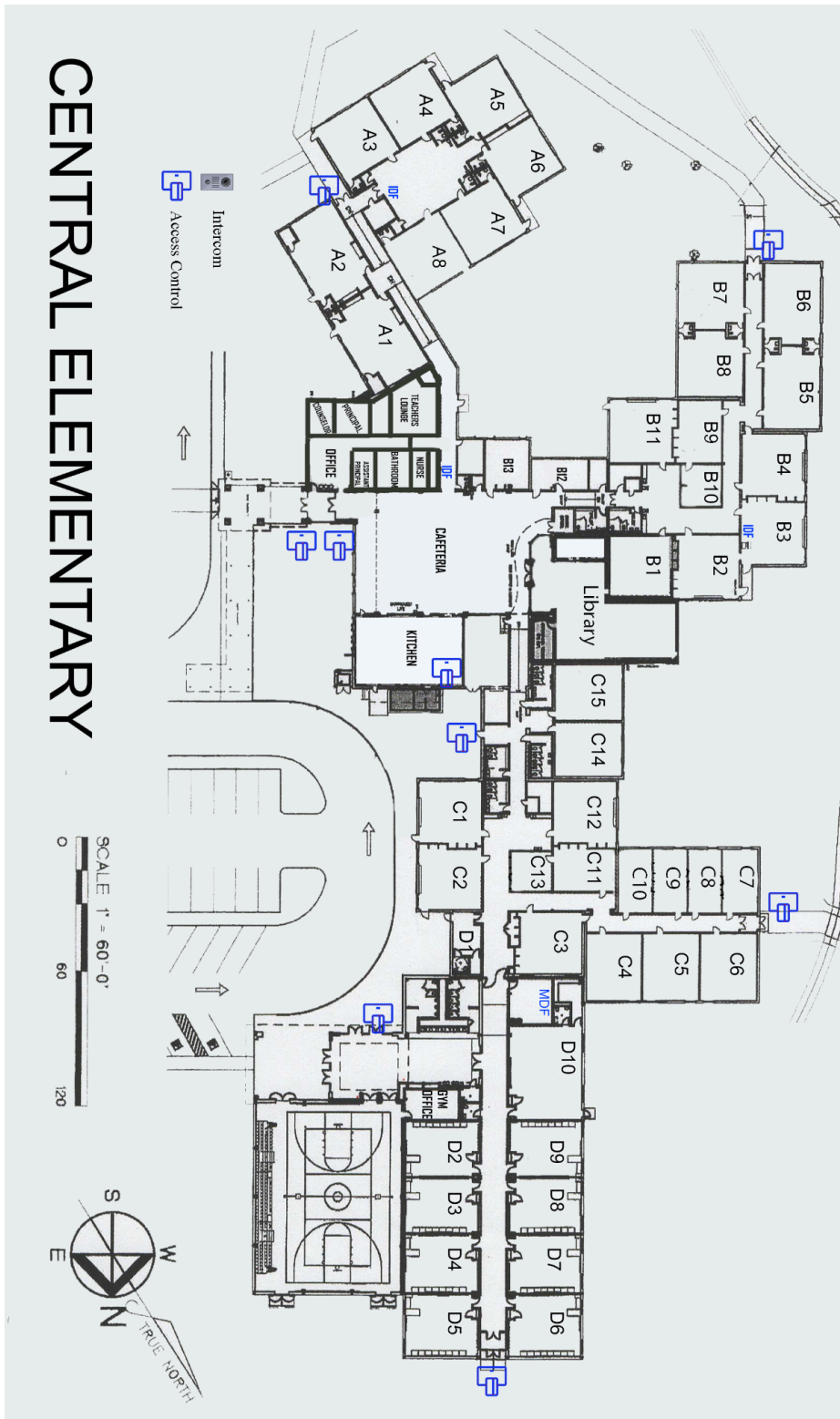
Business Hall	Dome- 5MP		Existing	
Library Hall	Dome- 5MP		Existing	
Counselor Hall	Dome- 5MP		Existing	
Auditorium Restrooms	Dome- 5MP		Existing	
Auditorium Hall	Dome- 5MP		Existing	
Auditorium	Dome- 5MP		Existing	
E. Library	Dome- 5MP		Existing	
W. Library	Dome- 5MP		Existing	
TSI Center	Dome- 5MP		Existing	
ITV Room	Dome- 5MP		Existing	
MDF Closet	Dome- 5MP		Existing	
Student Parking Entry	Dome- 5MP		Existing	
Lower Level Entrance	Dome- 5MP		Existing	
Cellar	Dome- 5MP		Existing	
Cellar 2	Dome- 5MP		Existing	
Locker Room Ext Door	Dome- 5MP		Existing	
Band	Dome- 5MP		Existing	
Fieldhouse Concessions	Dome- 5MP		Existing	
Tunnel	Dome- 5MP		Existing	
Practice Gym	Dome- 5MP		Existing	
Cafe	Dome- 5MP		Existing	
Cafe 2	Dome- 5MP		Existing	
Cafe Serving	Dome- 5MP		Existing	
Kitchen Rear	Dome- 5MP		Existing	
ISS Hall	Dome- 5MP		Existing	
History Hall To Cafe	Dome- 5MP		Existing	
History Hall to Office	Dome- 5MP		Existing	
English Hall	Dome- 5MP		Existing	
English Hall Stairs	Dome- 5MP		Existing	

Main Office	Dome- 5MP		Existing	
Main Office Hall	Dome- 5MP		Existing	
Main Office Restrooms	Dome- 5MP		Existing	
Garage Inside	Dome- 5MP		Existing	

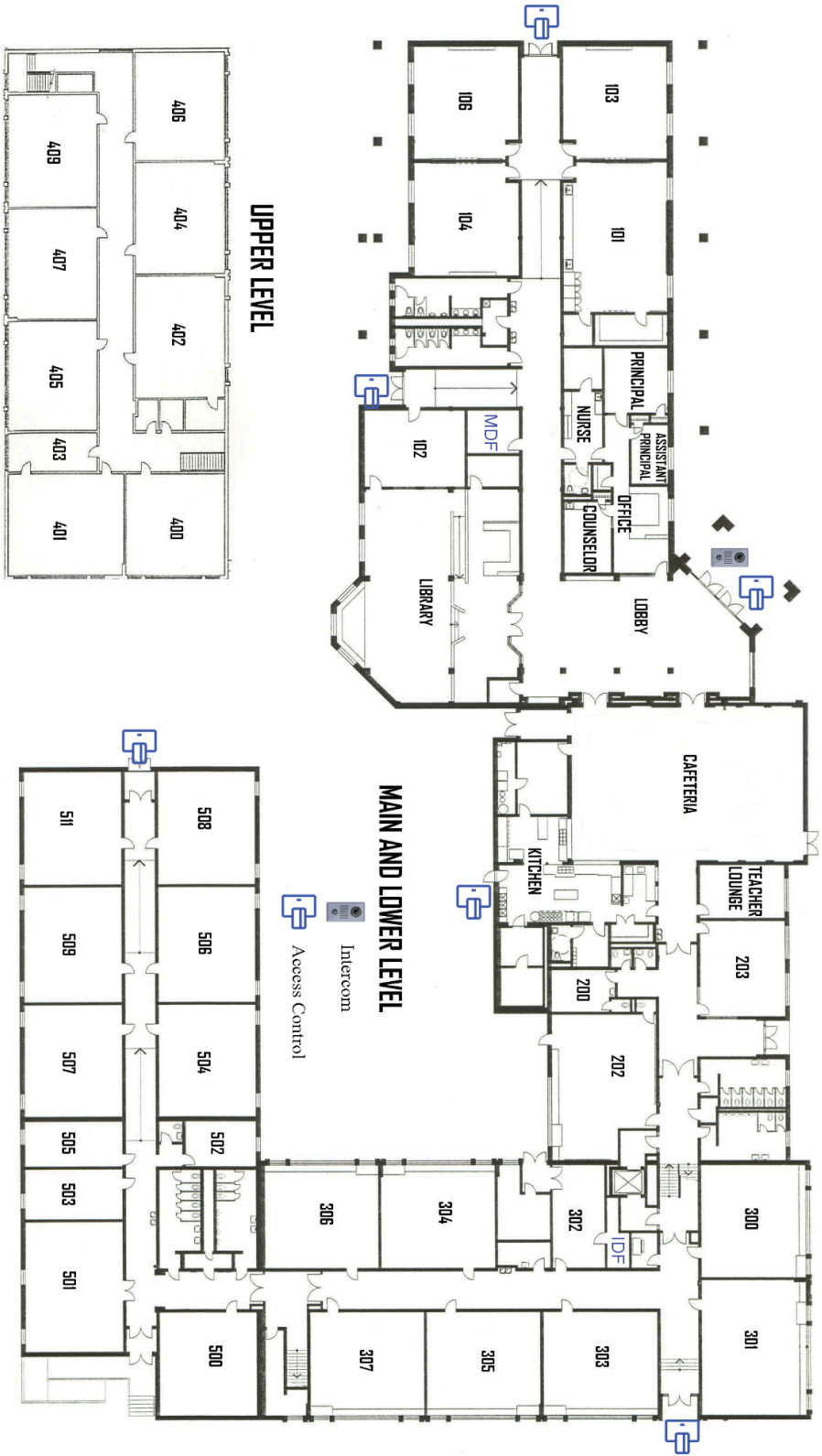
<b>Total Camera Count</b>	<b>New</b>	<b>Current</b>
CE	34	28
WE	27	27
ALT	9	10
MS	42	37
HS	66	70
Bus	5	6
Admin	6	6
	<b>189</b>	<b>184</b>

Appendix D

Door Access Controls Maps



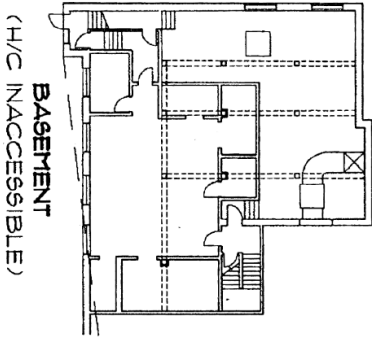
# WEST ELEMENTARY



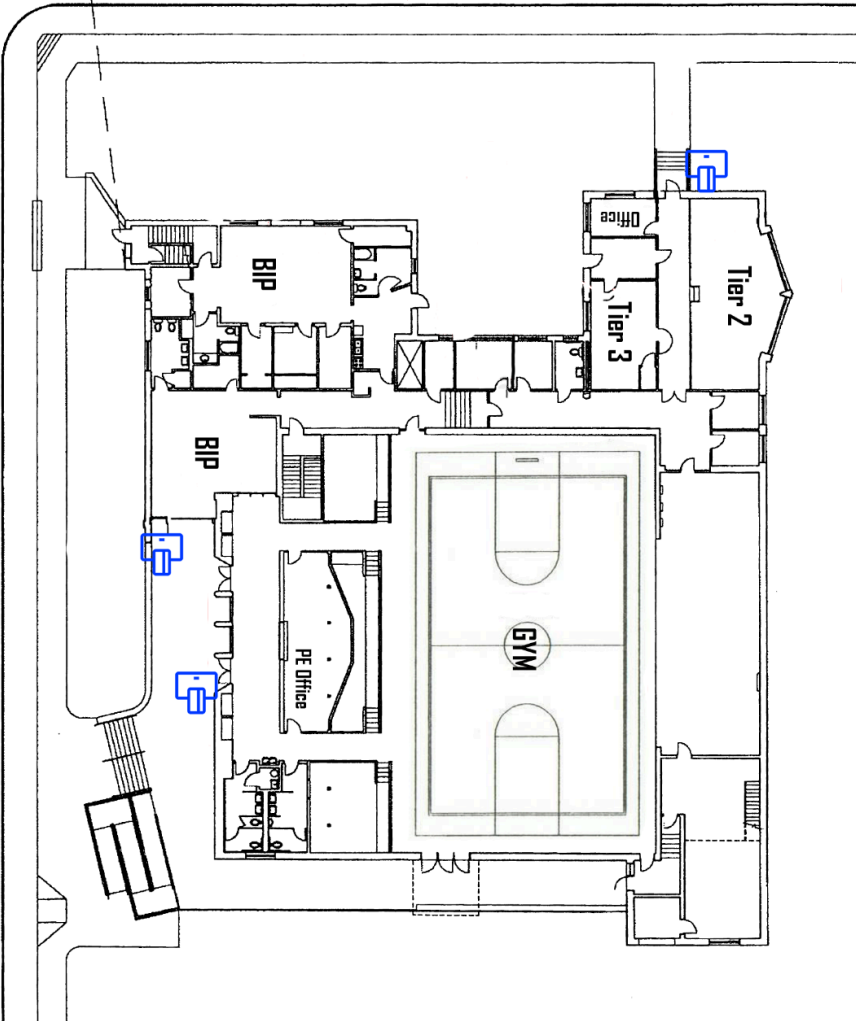
WEST ELEMENTARY SCHOOL  
CENTRAL R-3 SCHOOL DISTRICT  
PARK HILLS, MO

# Alternative School

Intercom  
Access Control



SMITH STREET



ALLEY

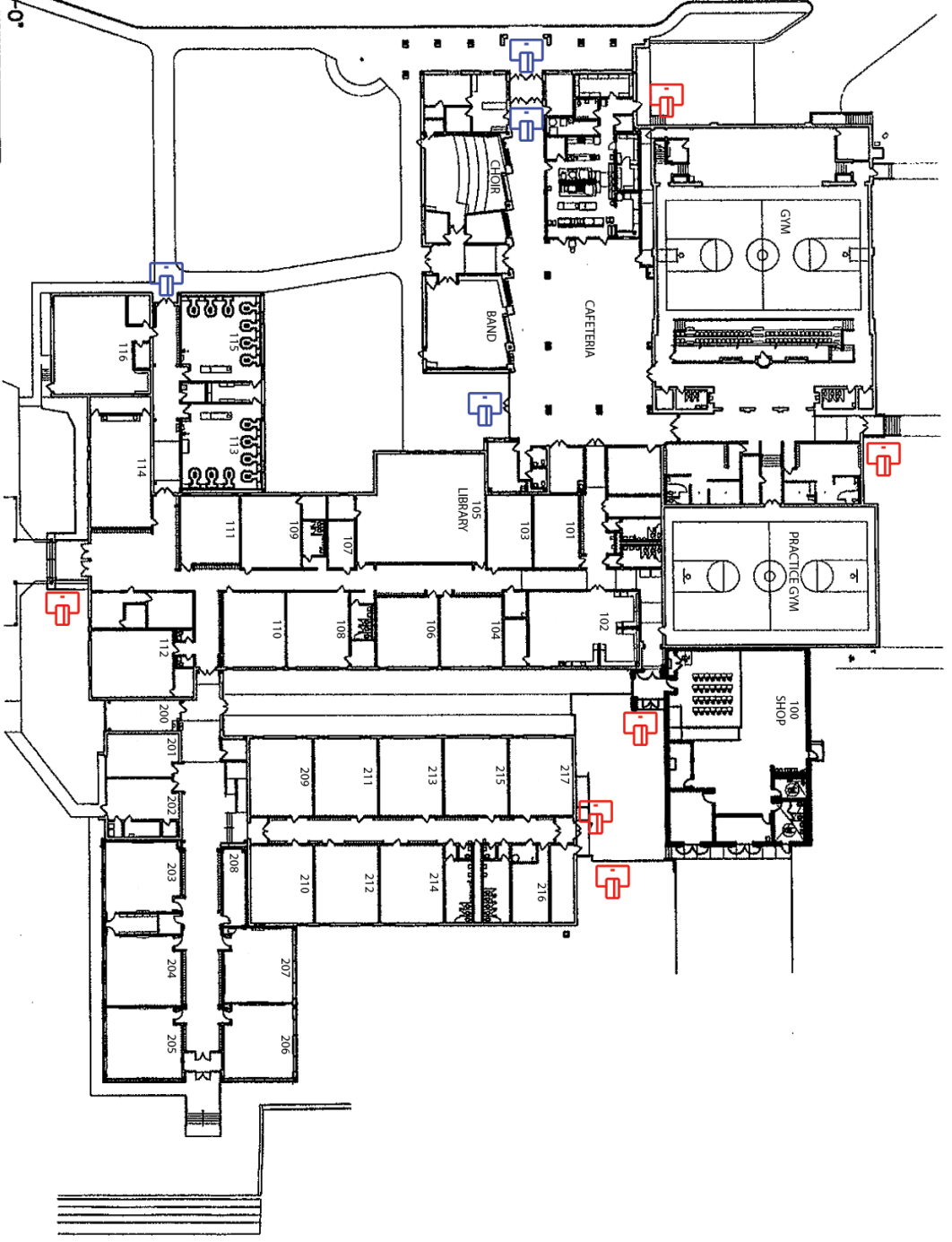
FITTE STREET


SCALE 1" = 30'-0"




**CENTRAL MIDDLE SCHOOL  
CENTRAL R-III SCHOOL DISTRICT  
PARK HILLS, MISSOURI**

**MASTER FLOOR PLAN**

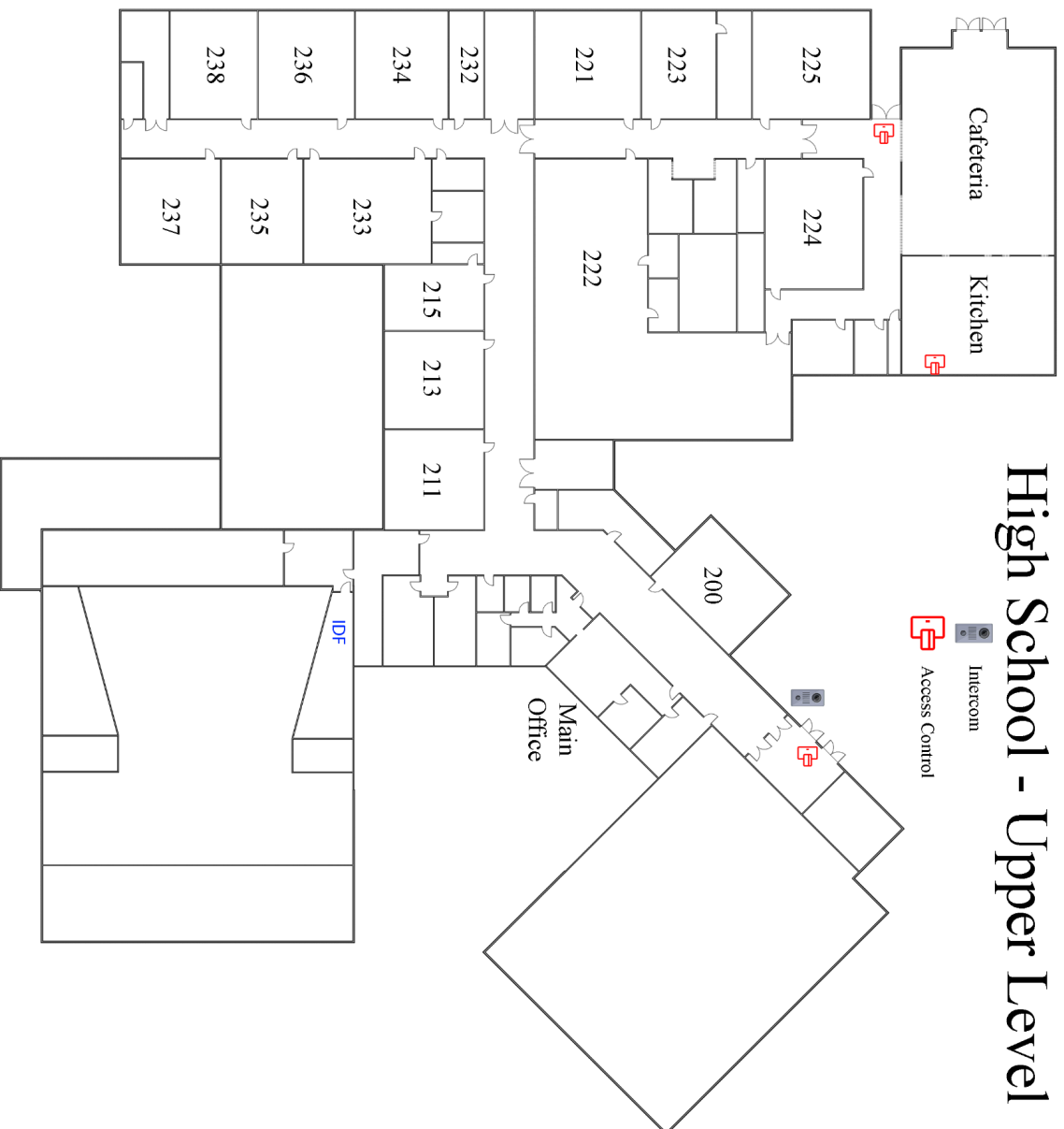


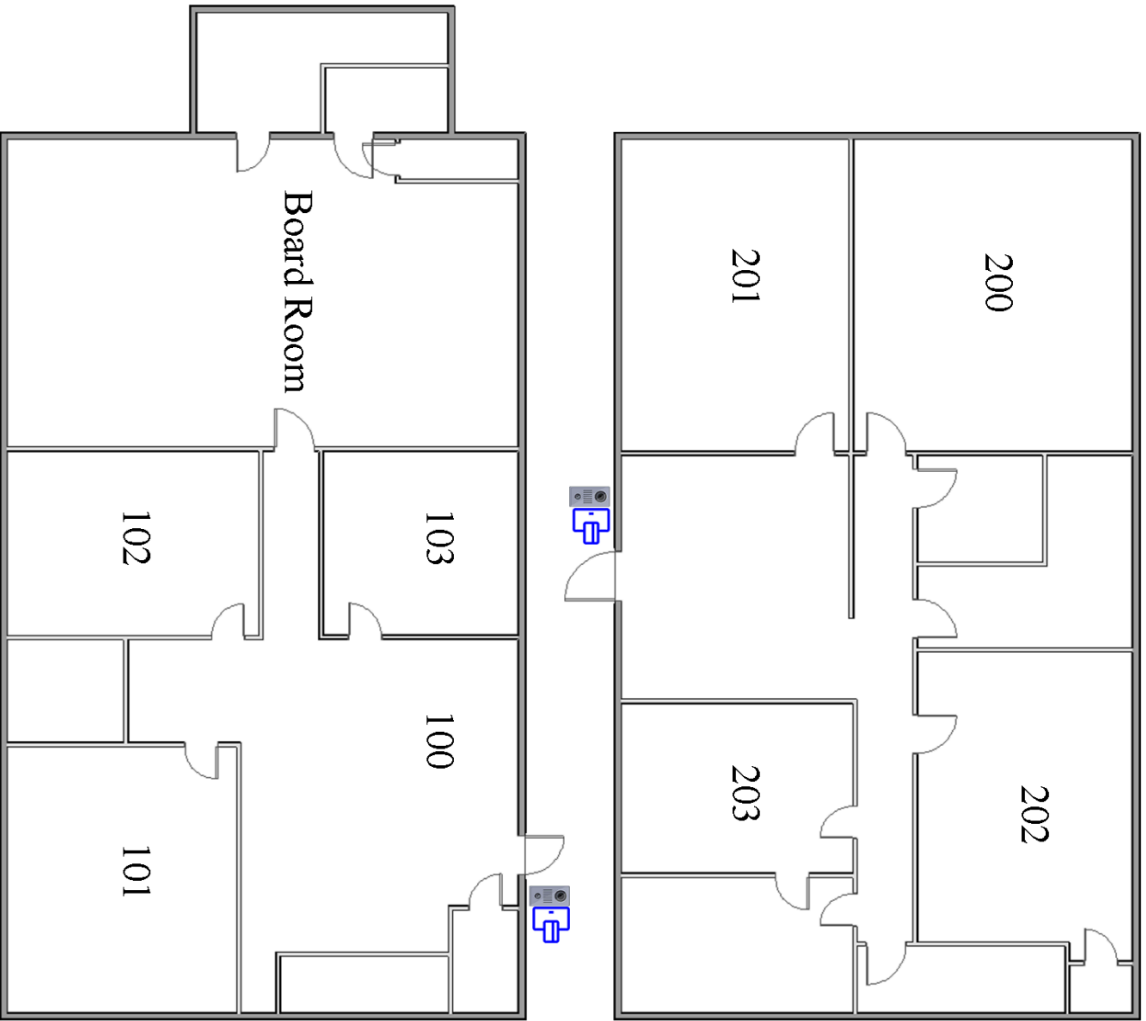
 Interroom  
Access Control

 New Access Control



# High School - Upper Level





Upper Level

Administration Office



Lower Level