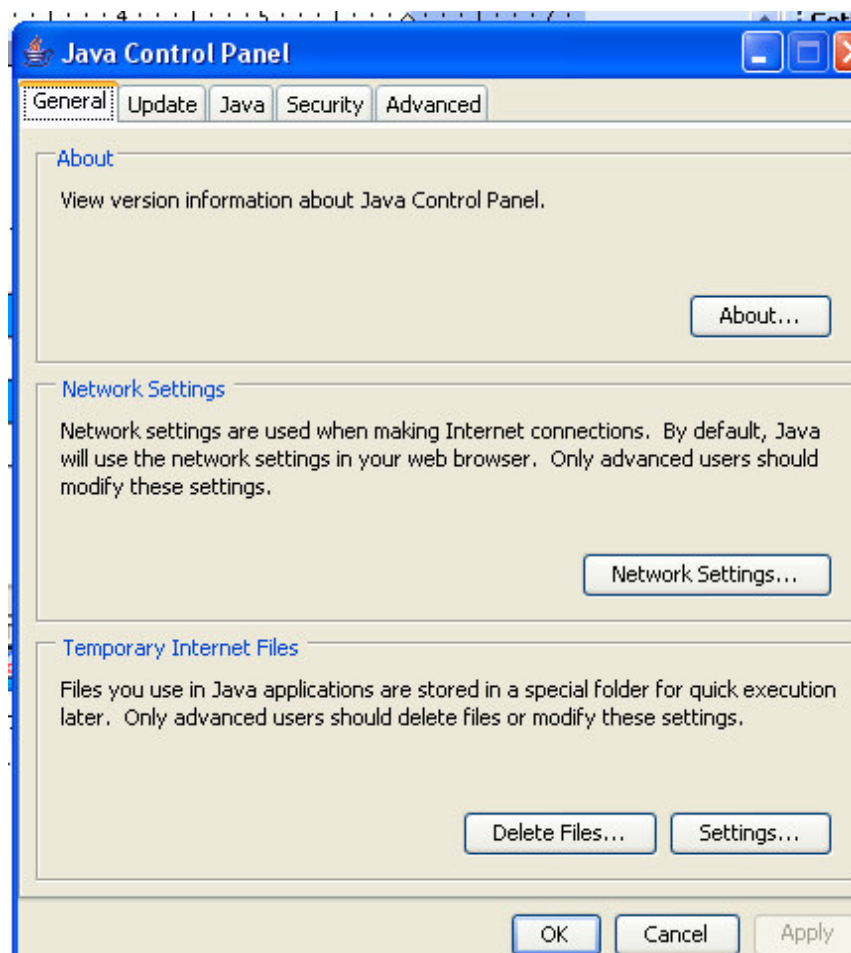


Fix Loading Java Applet errors

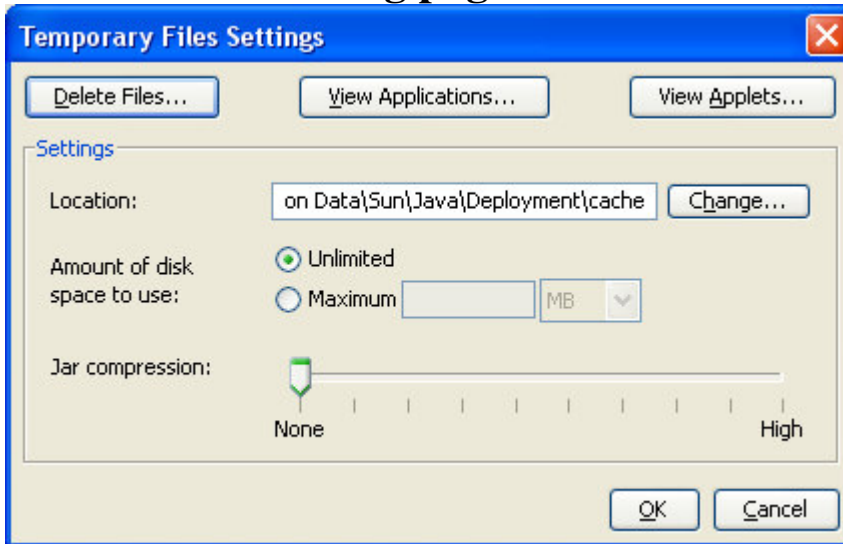
Open Internet Explorer and go to www.bluechalkapps.com and login. You should see the little Java (TM) 2 Platform symbol in bottom right corner after you enter Blue Chalk. Right click on it and click on Open Control Panel.



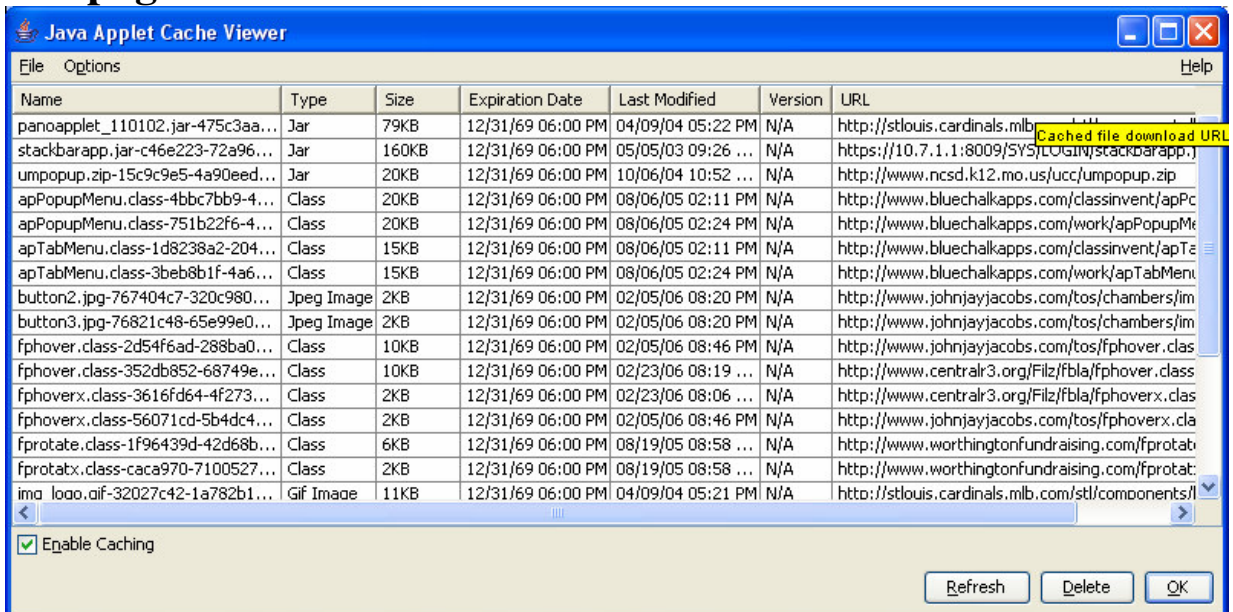
You should see this page below:



Click on Delete Files and then click on Settings and you will see the following page:



Click on View Applets in top right side and you will see this page:



At bottom left corner take the check mark out of the box beside Enable caching and click OK.

Close your browser and open back up and try it. It should then work.