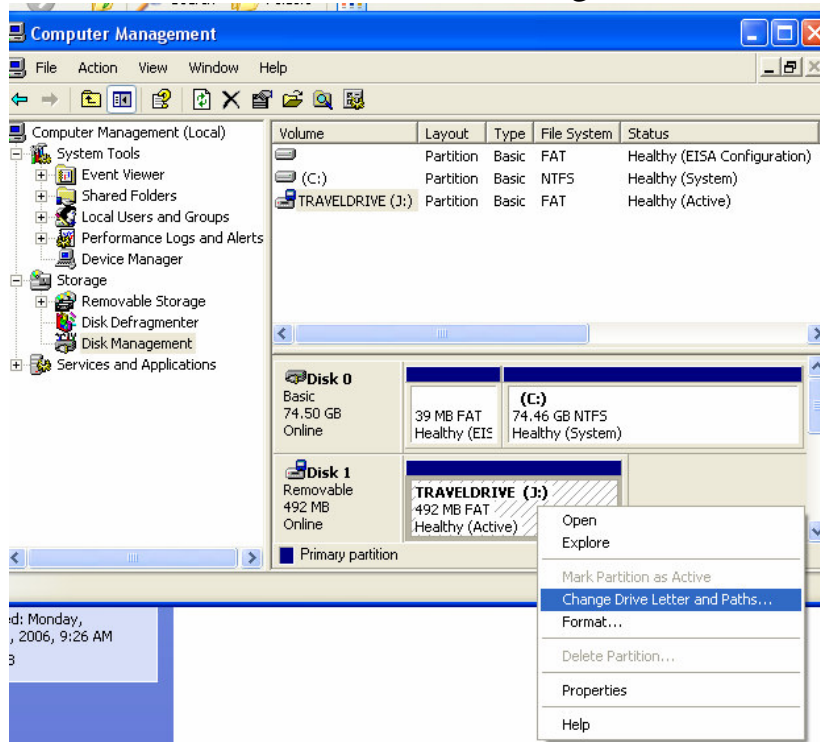


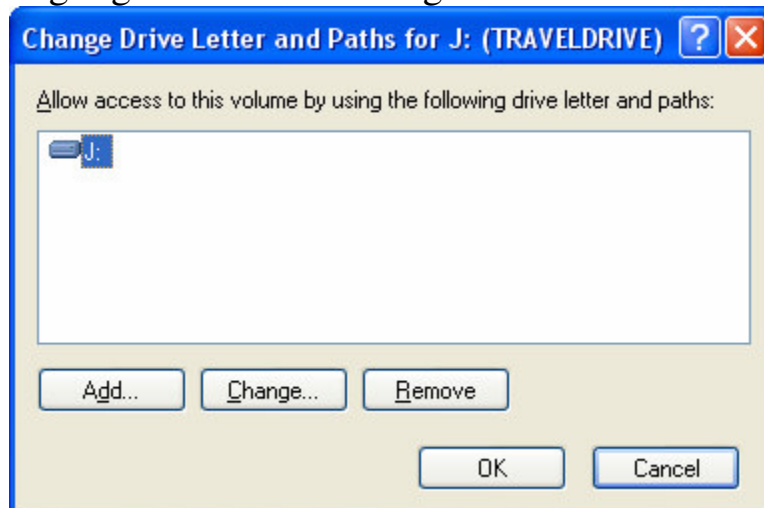
## Assigning a drive letter to Flash Drive

The only reason you would want to do this is if when you insert your flash drive it takes over a drive letter that you already use and then you have no access to that item or network drive.

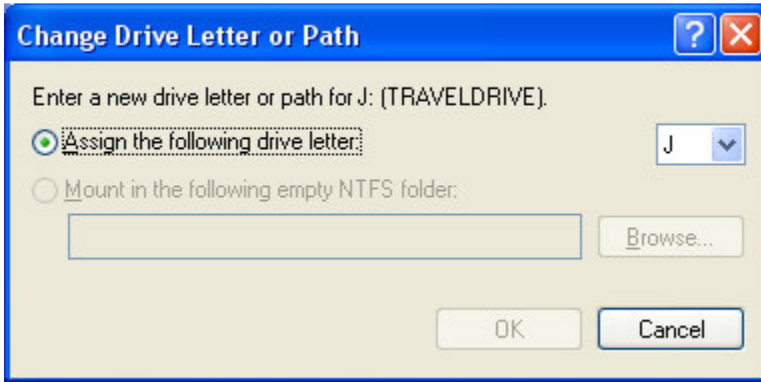
Go to Start, Control Panel, Administrative Tools, Computer Management, Then on left column find Disk Management and click on it. If your flash drive is inserted it will show it on the right hand side with the drive letter assigned to it. If you want to change it right click on the flash drive and choose Change Drive Letter and Paths.



Highlight the letter naming the flash drive and click on Change.



You will see the following screen so just click the drop down menu and choose a letter that you want that is not already being used and click OK.



Now it will remain as that drive letter and not interfere with other devices.